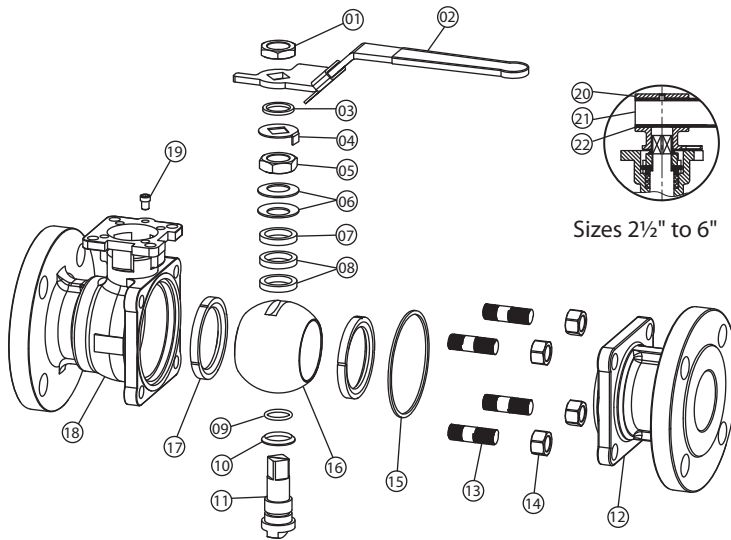


**ISO 5211 direct-mount  
Class 150 2-pc full port  
flanged ball valve**

**TF-2F-CS-150-D,  
SF-2F-150-D**



**Specification**

- ✦ Size range: 1/2"~6"
- ✦ Rating: Class 150
- ✦ Construction: Two-piece body, with floating ball design
- ✦ Flow bore: Full port

**Product features**

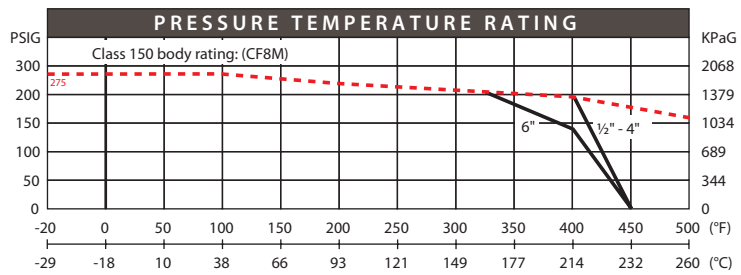
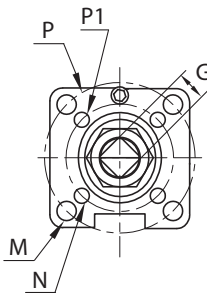
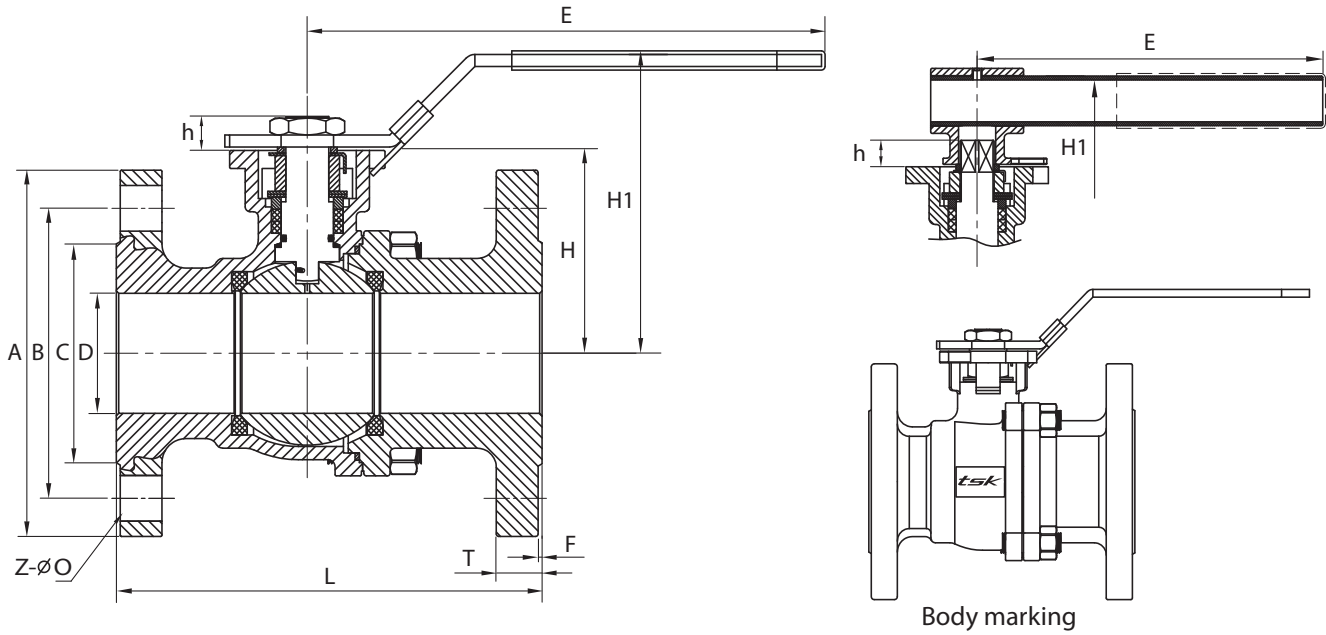
- ✦ Fugitive Emission qualified design to ISO 15848-1
- ✦ Design conformed to ANSI B16.34
- ✦ Blowout-proof stem
- ✦ Materials complied with NACE MR0175
- ✦ ISO 5211 direct mounting pad for actuation
- ✦ Body material options: WCB (TF-2F-CS-150-D) LCC (TF-2F-LC-150-D) and CF8M (SF-2F-150-D)

**Material list**

No.	Part name	Material			Qty
1	Handle nut	Stainless steel 304 / A276			1
2	Handle	Stainless steel 304 / A276			1
3	Stem washer	Stainless steel 304 / A276			1
4	Lock washer	Stainless steel 304 / A276			1
5	Gland nut	Carbon steel A108	Stainless steel 304 / A276		1
6	Belleville washer	Stainless steel 301			2
7	Gland	Stainless steel 304 / A276			1
8	Packing	PTFE			1 set
9	Stem O-ring	Viton			1
10	Thrust washer	RPTFE 15% GFT			1
11	Stem	Stainless steel 304 / A276	Stainless steel 316 / A276		1
12	Cap	A216 Gr. WCB	A352 Gr. LCC	SS A351 Gr. CF8M	1
13	Stud bolt	A193 Gr. B7	A320 Gr. L7	A193 Gr. B8	1 set
14	Bolt nut	A194 Gr. 2H	A194 Gr. 7	A194 Gr. 8	1 set
15	Body seal	PTFE			1
16	Ball	Stainless steel A351 Gr. CF8	Stainless steel A351 Gr. CF8M		1
17	Seat	RPTFE			2
18	Body	A216 Gr. WCB	A352 Gr. LCC	SS A351 Gr. CF8M	1
19	Stopper pin	Stainless steel 304 / A276			1
20	Screw	Stainless steel 304 / A276			1
21	Pipe	Carbon steel plated			1
22	Handle adapter	Stainless steel A351 Gr. CF8			1

**ISO 5211 direct-mount  
Class 150 2-pc full port  
flanged ball valve**

**TF-2F-CS-150-D,  
SF-2F-150-D**



DIMENSIONS																		
Size (mm/in)	A	B	C	D	E	F	G	H	H1	L	M	N	P	P1	T	h	O	N
15 ½"	89.0	60.5	35.0	15.0	140.0	1.6	9.0	48.0	80.5	108.0	7.0	6.0	F05	F04	11.2	8.5	16.0	4
	3.50	2.38	1.38	0.59	5.51	0.06	0.35	1.88	3.17	4.25	0.275	0.236			0.440	0.334	0.629	
20 ¾"	98.5	70.0	43.0	20.0	140.0	1.6	9.0	53.5	86.0	117.0	7.0	6.0	F05	F04	12.8	8.5	16.0	4
	3.88	2.75	1.69	0.79	5.51	0.06	0.35	2.10	3.38	4.61	0.275	0.236			0.503	0.334	0.629	
25 1"	108.0	79.2	51.0	25.0	180.0	1.6	11.0	64.0	104.3	127.0	7.0	6.0	F05	F04	14.3	10.0	16.0	4
	4.25	3.12	2.00	0.95	7.09	0.06	0.43	2.52	4.10	5.00	0.275	0.236			0.562	0.393	0.629	
40 1½"	125.0	98.6	73.2	38.0	215.0	1.6	14.0	76.0	115.5	165.0	9.0	6.0	F07	F05	17.5	10.0	16.0	4
	4.92	3.88	2.88	1.50	8.46	0.06	0.55	2.99	4.54	6.50	0.354	0.236			0.688	0.393	0.629	
50 2"	152.5	120.7	92.0	50.0	215.0	1.6	14.0	84.5	124.4	178.0	9.0	7.0	F07	F05	19.1	14.0	19.0	4
	6.00	4.75	3.62	1.97	8.46	0.06	0.55	3.33	4.89	7.00	0.354	0.275			0.751	0.551	0.748	
65 2½"	177.8	139.7	104.7	64.0	450.0	1.6	17.0	106.8	165.3	190.0	12.0	10.0	F10	F07	22.3	14.0	19.0	4
	7.00	5.50	4.12	2.52	17.71	0.06	0.67	4.20	6.50	7.48	0.472	0.393			0.877	0.551	0.748	
80 3"	190.5	152.4	127.0	76.0	450.0	1.6	17.0	116.0	174.5	203.0	12.0	10.0	F10	F07	23.9	18.0	19.0	4
	7.50	6.00	5.00	2.99	17.71	0.06	0.67	4.57	6.87	8.00	0.472	0.393			0.940	0.708	0.748	
100 4"	228.6	190.5	157.0	100.0	450.0	1.6	17.0	154.5	213.0	229.0	12.0	10.0	F10	F07	23.9	18.0	19.0	8
	9.00	7.50	6.18	3.94	17.71	0.06	0.67	6.08	8.38	9.02	0.472	0.393			0.940	0.708	0.748	
150 6"	280.0	241.5	216.0	150.0	800.0	1.6	27.0	213.0	281.5	394.0	14.0	N/A	F12	F12	25.5	30.0	22.3	8
	11.02	9.50	8.50	5.91	31.49	0.06	1.06	8.38	11.08	15.51	0.551	N/A			1.003	1.181	0.877	